



# Churchill State School

264a Warwick Road, Churchill Q 4305

Telephone: (07)3810 4333




Fax: (07)3810 4300





## UNIFORMS

Churchill State School students **MUST** come to school wearing their full school uniform daily. We have recently updated our school uniform and details are below. Students may wear the old uniform during this transition period.

The school uniform is expected as normal attire for students attending Churchill State School. This is important to assist our students at school to remain safe and included.

We encourage parents to cooperate by providing full school uniform for their children. Our school colours are purple, black, grey and white. Children who are not in uniform must provide a note.

<b>Shirt</b>	Purple polo shirt (unisex) - with the Churchill State School Badge  Senior Students may choose to wear their Churchill State School Seniors shirt as an alternative to the school polo shirt. No shirts are to be visible under uniform unless it is black	
<b>Shorts</b>	Black rugby knit shorts. Shorts must be just above knee length they cannot be short shorts. Refer to the images provided to show the length of shorts required.	
<b>Shoes</b>	Fully enclosed black shoes with socks.  No high heeled shoes or thongs or sandals.	

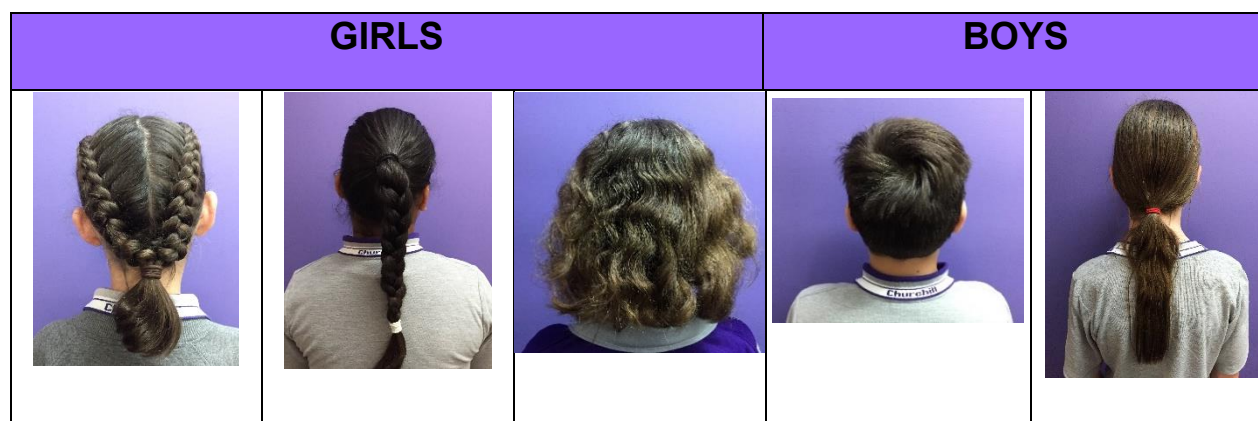
<p><b>Hat</b></p>	<p>Black bucket hat with Churchill logo.</p> <p>Hats are reversible with student house colours on the inside.</p>	
<p><b>Winter</b></p>	<p>Black tracksuit pants</p> <p>Grey Churchill hooded sweat shirt or grey Churchill jumper.</p>	
<p><b>Hair Accessories</b></p>	<p>Hair accessories are to be purple, black, grey or white.</p>	
<p><b>Sports Music</b></p>	<p>All sports teams and music groups have a uniform specific to the sport. Details of the particular sports uniform are provided to students when they are accepted into the sporting team. Sports shirts are not to be worn to school they are to be returned to the school washed each week.</p>	<p>Music – Plain black pants and top with music vest.</p> <p>Plain purple bow.</p> 

**The Dress Code also includes:**

**Inappropriate Dress:** tank tops, singlets, bike pants, shirts with inappropriate pictures or messages, short shorts, thongs, sandals or high heels are not permitted according to the above School Uniform policy.

**Jewellery:** only a watch and studs or sleepers (maximum of two in each ear lobe) is permitted. Body piercing other than in the ears is not allowed! Religious or cultural icons are at the discretion of the Principal.

**Hair & Make Up:** hair is to be tied up if at or below shoulder length and fringes are to be off the face. Styles and colouring should be appropriate for the school and so a hat can be worn. Hair bands, clips, head bands and other accessories should be purple, black, grey or white. No make-up or nail polish is allowed.



The enforcement of the uniform policy is not to make it difficult for families but to ensure all students are in the correct uniform.

**UNIFORM SUPPLIES**

Lowes – Booval Fair Shopping Centre is the official stockist for our school uniforms. They carry our full range of summer and winter uniforms. For more information, including prices and availability please contact the store directly on – (07) 3812 0654.

Our tuck shop from time to time has second hand uniforms for sale. Please contact the tuck shop directly to make enquiries -3810 4324.